

e-meche Classic



Step 1

Leanne before photo. A classic full set of highlift highlights incorporating the use of bleach.



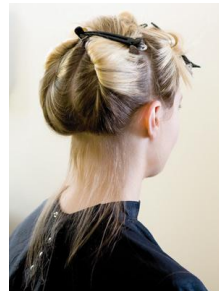
Step 2

Section the hair into half to start.



Step 3

Section hair into quarters.



Step 4

Take 1cm sections and weave desired thickness.



Step 5

Place e-meche pack in between weaved section.



Step 6

Apply highlift tint 3mm away from root.



Step 7

Continue until you have completed a full head.



Step 8

Bleach application should be set 3/4mm back from the top of the e-meche pack to allow for swelling of pro bleach.



Step 9

Water will dissolve the adhesive and the pack will glide out.



Step 10

Amazing highlift results.



Step 11

Finished results.



Step 12

Finished and styled results.